

## Important information!

**Please follow these instructions before downloading and installing PR electronics' PACTware!**

### **PACTWare 3.0**

Before installing PACTWare 3.0, you must install the .NET Framework 1.1.

The .NET Framework is a component of the Microsoft Windows® operating system used to build and run Windows-based applications such as PACTware. It is therefore important to install the .NET Framework before installing PACTware. To install the .NET Framework 1.1, do the following:

1. Look for the .NET Framework at the homepage of **Microsoft downloads**. Download the .NET Framework 1.1 from Microsoft and place it in a directory of your choice
2. Double click the downloaded file and follow the installation instructions

After installing the .NET Framework 1.1, then:

1. Download the zipped PACTWare 3.0 from our homepage, please note that the file size is 23 mb
2. Unzip the file to the chosen directory
3. Double click the setup.exe to install and follow the installation instructions

Go to the PACTware Quick Guide

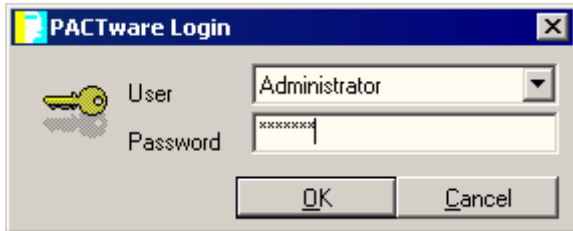
This guide gives you a short tour of PACTware and shows you the basics of what you need to know to get started.

The following topics will be covered:

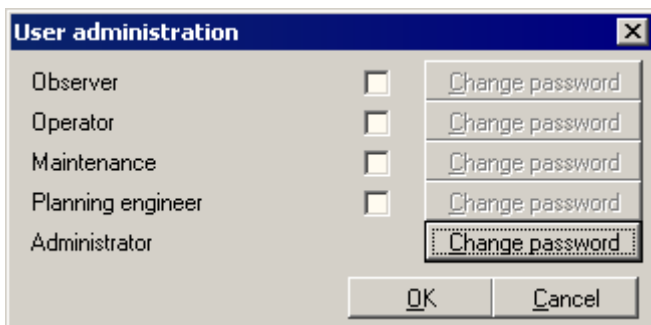
1. Logon to PACTware .....	3
2. How to add/remove a communication protocol .....	3
3. How to add/remove a device to a communication protocol .....	5
4. Connect and disconnect protocols and devices .....	6
5. Saving a project.....	7

## 1. Logon to PACTware

When starting PACTWare you will be asked to type in a password. The *default user* is **Administrator** and the *default password* is **manager**.



After you have logged on using the default user and password, you can change the Administrator password in Extras->User administration by clicking the *Change password* button.



Note: If you do not choose a password in the *Change password* dialog but just clicks *OK*, the PACTware Login dialog will not be shown when you start PACTware afterwards. This is convenient if you use PACTware frequently or if you do not need the password protection.

## 2. How to add/remove a communication protocol

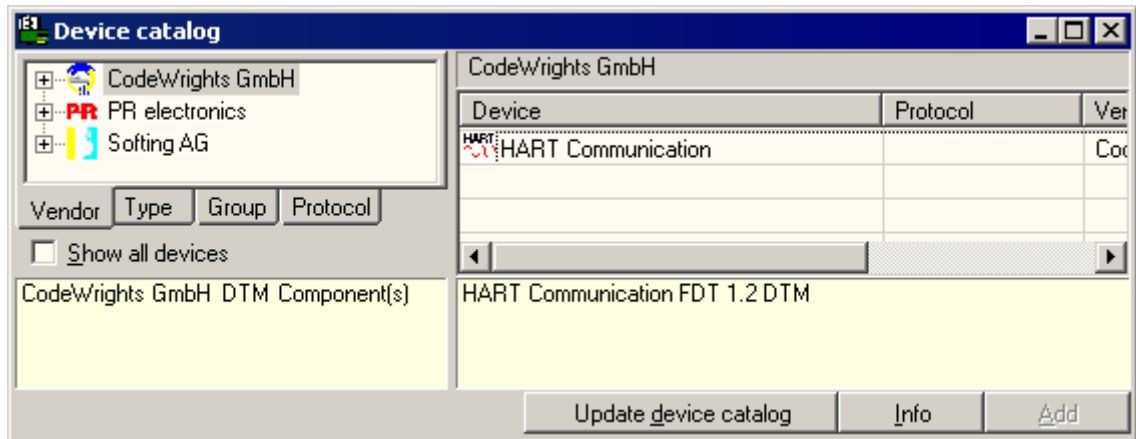
In order to communicate with a device you need to install the type of communication protocol that the device requires. The two most common communication protocols are the *HART* and *Profibus* protocols. The *HART* protocol is installed with the PACTware installation.

There are two ways to add a communication protocol:

1. Click the *Device catalog* menu button



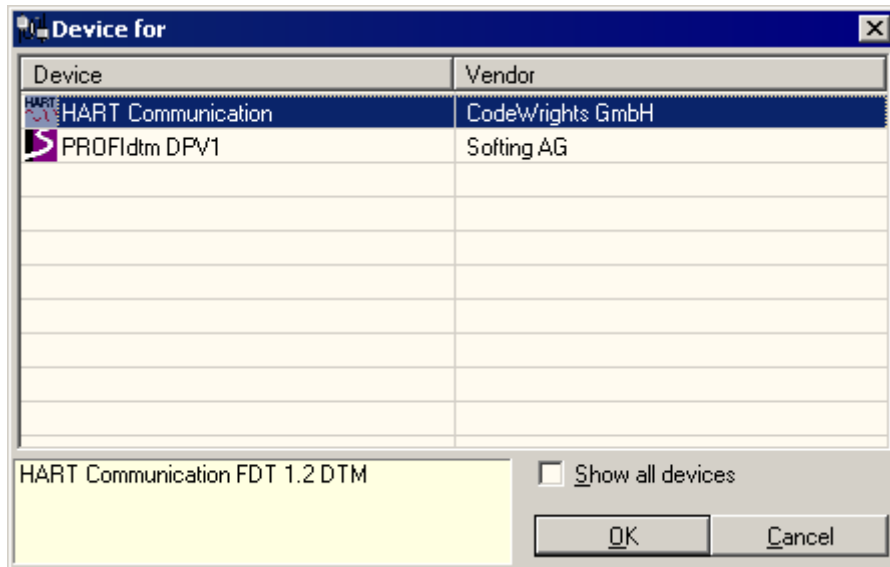
Then the following dialog appears:



When you start PACTware the first time, this dialog box does not contain any protocols or devices. To see the protocols and devices installed on your computer, click the *Update device catalog*. You should press the *Update device catalog* button every time you have installed or uninstalled either a communication DTM or device DTM, to reflect what is currently installed on your computer.

To add a protocol, you click the vendor tab in the left panel and then double click the protocol or click *Add*.

2. In the left pane of PACTware, right click the *HOST PC* and chose *Add device*



To add a protocol, simply double click the protocol you want to use.

To remove a protocol, you select it and either press the *delete* button on the keyboard or right click the protocol and chose *delete device* from the context menu. Any devices added to the protocol will also be removed.

### 3. How to add/remove a device to a communication protocol

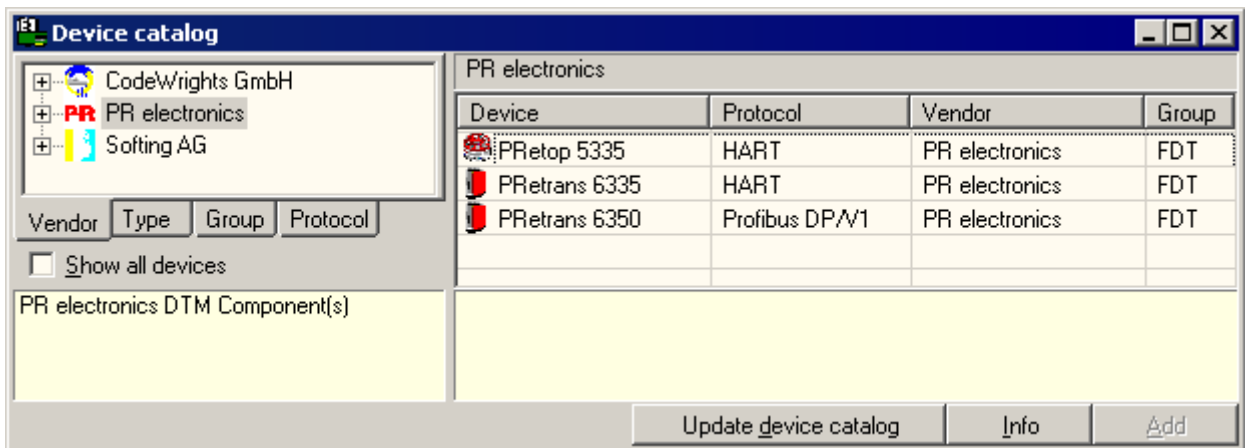
Before adding a device, you must add a communication protocol.

There are two ways to add a communication protocol:

1. Click the *Device catalog* menu button



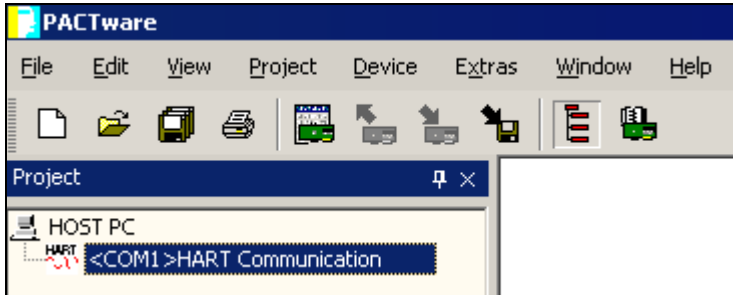
Then the following dialog appears:



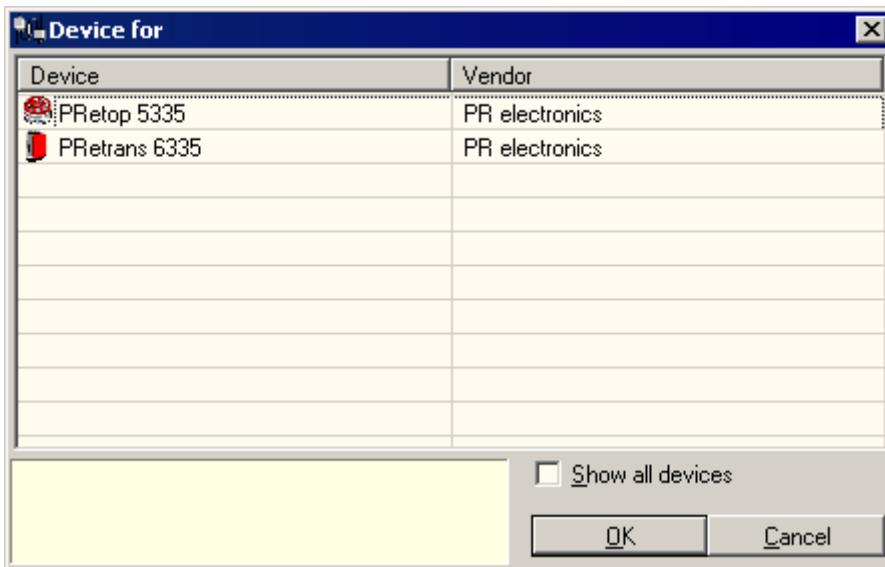
When you start PACTware the first time, this dialog box does not contain any protocols or devices. To see the protocols and devices installed on your computer, click the *Update device catalog*. You should press the *Update device catalog* button every time you have installed or uninstalled either a protocol DTM or device DTM, to reflect what is currently installed on your computer.

To add a device, you click the vendor tab in the left panel and then double click the device or click *Add*.

2. In the left pane of PACTware, right click the protocol where you want to add the device



Then the following dialog appears:



To add a device, simply double click the device you want to use.

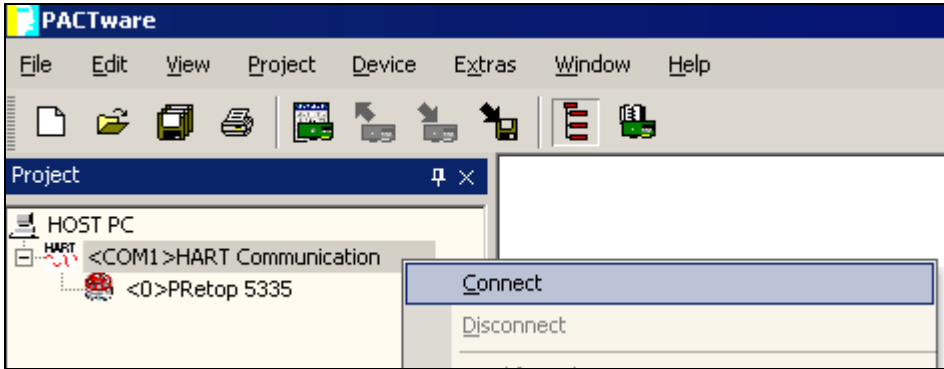
Note: It is possible to add more than one device at the time to the protocol and you can add the same device to the same protocol more than once.

To remove a device from a protocol, you select it and either press the *delete* button on the keyboard or right click the device and chose *delete device* from the context menu.

#### 4. Connect and disconnect protocols and devices

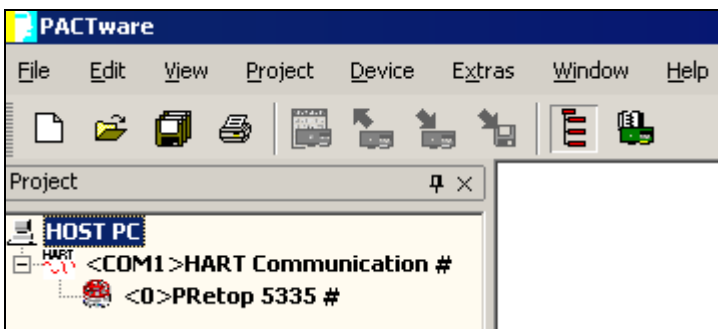
After you have added a communication DTM and a device DTM, you need to connect to the protocol or device in order to communicate with them.

To connect/disconnect a protocol, right click the protocol and choose either *Connect* or *Disconnect* from the context menu. When connecting the protocol, only the protocol will be connected. Any of the devices added to the protocol needs to be manually connected. However, when disconnecting a protocol, then any devices added to the protocol will also be disconnected.



To connect/disconnect a device, right click the device and choose either *Connect* or *Disconnect* from the context menu. If the protocol is disconnected when the device is being connected, then the protocol will automatically be connected. However, when you disconnect a device, then only the device is disconnected.

If a protocol/device has been properly connected, there will be a # following the protocol/ device.



## 5. Saving a project

When you have added protocols and devices, you can save your project so you will not have to spend time the next time you want to use these settings again. You can save your project at any given time in File-> Save as or Save. Your project can even be empty, that is, no protocols or devices are added yet.